



basic education

Department:
Basic Education
REPUBLIC OF SOUTH AFRICA

NATIONAL SENIOR CERTIFICATE

GRADE 12

ENGINEERING GRAPHICS AND DESIGN P2

NOVEMBER 2025

MARKING GUIDELINES

MARKS: 100

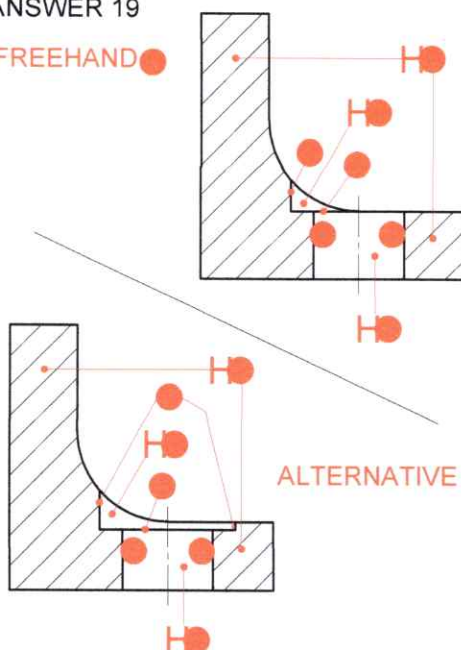
These marking guidelines consist of 7 pages.

ANSWERS

1	JJ-14213	1
2	THOMAS	1
3	CUSTOM CONTAINERS	1
4	AUTOCAD 2024	1
5	www.prodraw.co.za	1
6	THIRD-ANGLE ORTHOGRAPHIC PROJECTION	1
7	150	1
8	RIGHT VIEW	1
9	PARTIAL	1
10	REVOLVED	1
11	ACROSS FLATS	1
12	3	1
13	6°	1
14	F: 28 G: M10 H: 31 J: M6	4
15	MAX - 14.35	1
	MIN - 13.75	1
16	24	1
17	NO MACHINING	1
18	b: <u>PRODUCTION METHOD / TREATMENT / COATING / FINISH</u>	1
	d: <u>DIRECTION OF LAY</u>	1
19	See below	4
20		3
TOTAL		30

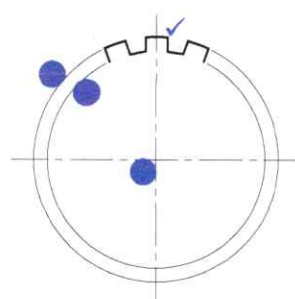
ANSWER 19

FREEHAND



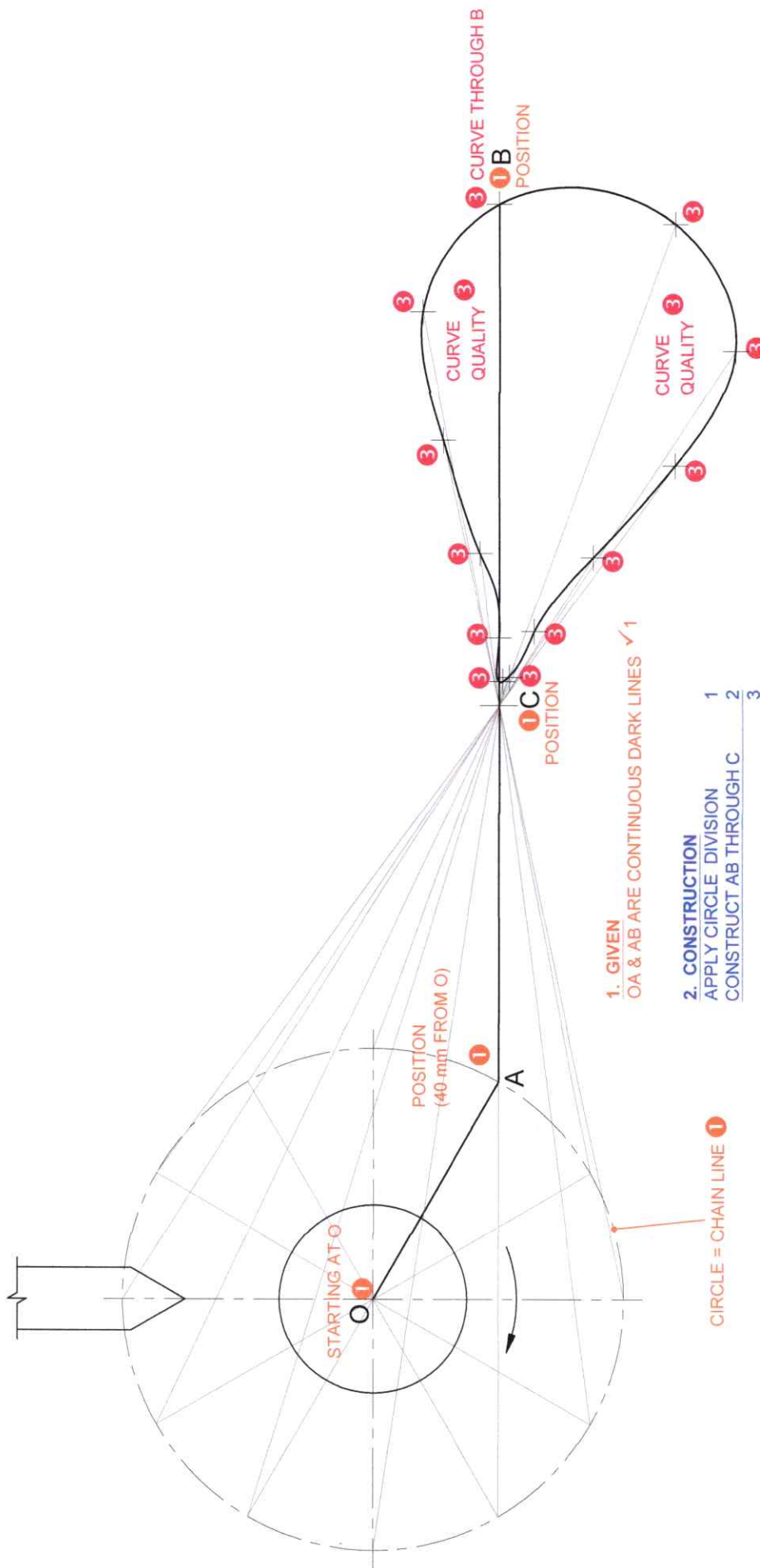
ANSWER 20

FREEHAND



PAPER 2 QUESTION 1
GRADE 12
November 2025
MARKING GUIDELINE





ASSESSMENT CRITERIA: MECHANISM		
1	GIVEN	3 ½
2	CONSTRUCTION	3
3	POINTS + CURVE	7
SUBTOTAL		13 ½

PAPER 2 QUESTION 2
 GRADE 12
 November 2025
 MARKING GUIDELINE

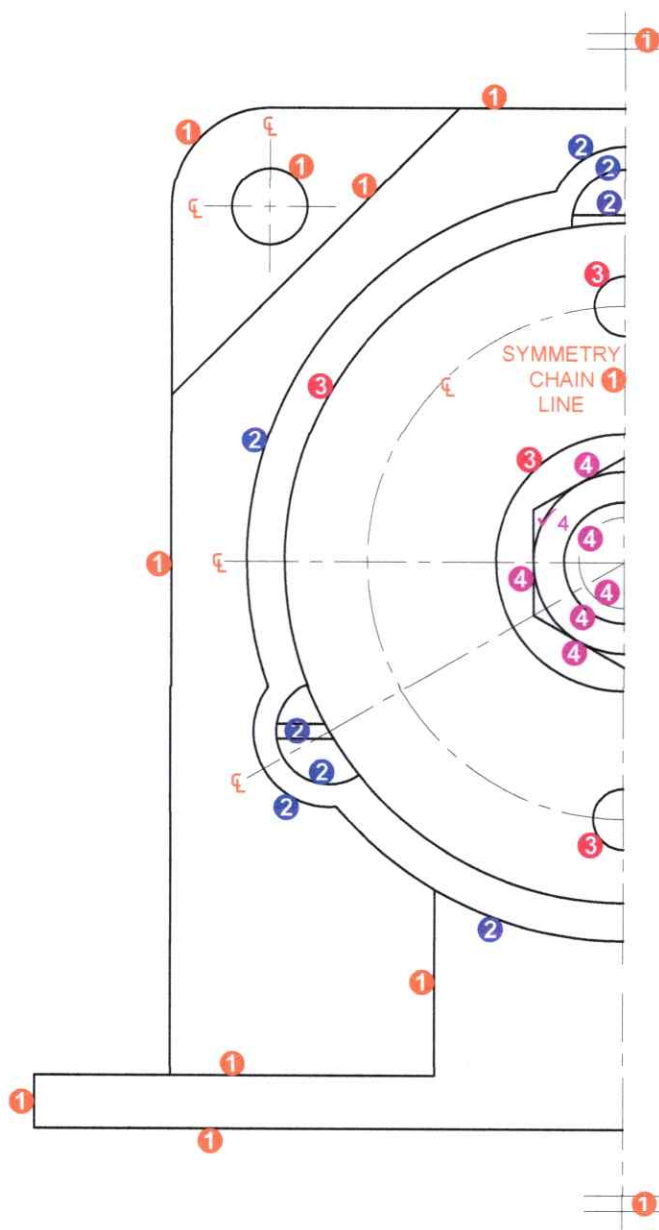
ASSESSMENT CRITERIA			
1	PLACING + AUX. VIEW	2	
2	FRONT PORTION	14 1/2	
3	BACK PORTION	14 1/2	
4	CIRCLES + CONSTR. + CL	8	
TOTAL		39	

PAPER 2 QUESTION 3

GRADE 12

November 2025

MARKING GUIDELINE



1. CENTRE LINES (CL)

SANS COMPLIANT

CENTRE LINES (1 - 3 = 0,5; 4 - 5 = 1; 6 - 7 = 1,5; 8 - 9 = 2) $\frac{1}{2}$

$\frac{2}{3}$

ASSESSMENT CRITERIA

RIGHT VIEW

1	HOUSING + SYMMETRY	6
2	COVER + SCREWS	4
3	FLANGE COUPLING	2
4	M16 NUT + SHAFT	4
SUBTOTAL		16

PAPER 2 QUESTION 4
GRADE 12
November 2025
MARKING GUIDELINE

